



September 2019

**Welcome to
Parents Information Evening**

Mr Longden – Headteacher

Mr Magee – Key Stage Four Director of Progress

Mrs Vallance – Year 10 Guidance Manager



OFSTED 2019

“The leadership team has maintained the good quality of education in the school since the last inspection. Your principled and determined leadership has created a caring and stimulating ethos in the school that enables pupils to make strong progress and achieve well.”

“You and your highly effective leadership team are ambitious for pupils and carefully consider their best interests in everything you do.”



GCSE Results 2019

Once again, we are very proud of all our students, who have achieved another excellent set of results. Both pupils and staff have risen to the challenge of the more difficult GCSEs and turned in some exceptional performances.

English and Maths results continue to be of a very high standard. Provisional results show over 70% and 80% of pupils achieved a grade 9 to 4 in English and Maths respectively; with 70% achieving a grade 9 to 4 in both subjects.

There has also been a very strong performance in Science with 71% of pupils achieving two grade 4s or higher in the subject. The performance of the triple sciences was some of the best in the school with over 35% of pupils achieving grade 9 to 7 in Biology, Chemistry and Physics.

The performance of the core subjects combined with very strong attainment in the Humanities and Modern Foreign Languages has seen the school achieve a very strong figure of 21% this year for the more rigorous Ebacc, where a grade 5+ is required in all elements



The task ahead is to continue...

- Raise the bar in terms of standards
- Strengthen the learning culture across the school
- Continue our excellent pastoral care and support
- Strive for “Personal Best” in all we do
- The success and care of all our young people at the centre of all we do



English

It is essential that all pupils have their own copy of the texts they are studying for Literature, so they can make their own notes for revision before the final GCSE Exams. There is no need to buy a specific edition of these texts, but pupils often find that having accompanying notes in the Shakespeare play helps them to understand the play.

You will have recently received a letter detailing which texts your son / daughter will study for English Literature. (If you are not sure which text your son / daughter has studied, please email their English teacher.)

Exams:

Language

Paper 1: Fiction reading and writing: 40%

Paper 2: Non-fiction: 60%

Literature

19th Century Novel & Shakespeare: 40%

Modern Text & Poetry: 60%



Maths

All Pupils will sit three GCSE papers (AQA). Each paper is 1 hour 30 minutes long and is worth 33.33% of the final GCSE grade.

Paper 1: Non-calculator

Paper 2: Calculator

Paper 3: Calculator

Each paper consists of a mix of question styles, from short, single-mark questions to multi-step problems. The mathematical demand increases as a pupil progresses through the paper.



Science

Pupils will be studying either:

- Combined Science (which will result in two GCSEs)
- Triple Science (which will result in three GCSEs)

Letters for revision guides were handed out last year, please speak with Mrs Kerwood if you require any further information on revision guides.

s.kerwood@toynbee.hants.sch.uk



Computer Science

100% exam + NEA (Non Examined Assessment)

Component	Marks	Duration	Weighting	
Computer systems (01)	80	1 hour 30 mins	50%	Calculators not allowed
Computational thinking, algorithms and programming (02)	80	1 hour 30 mins	50%	Calculators not allowed

NEA is a programming project to develop their practical ability in the skills developed in components 01 and 02. Students are required to spend 20 hrs in the classroom on the programming task.

IT rooms are available after school for the students to complete all tasks.

Revision Guides and a specific Programming guide are available through the school.



Design and Technology

During year 10, students will cover the remaining content of the Design and Technology syllabus. They can use their online digital book to support any homework set.

They will carry out a mock controlled assessment throughout the year which will be assessed at the end of the year using the GCSE criteria.

Year 10 Mock result will consist of:

Mock controlled assessment 50%

Exam paper 50% 2 hours



Art

60% coursework and 40% Exam.

Coursework needs to be completed by the end of January 2021

The GSCE exam consist of around 20 lessons plus 10 homework's to prepare for the exam. Preparation work is worth 75% of the grade.

The exam is over two days where they will make a final piece in response to their preparation.

Timetabled catch up sessions will be available after school.

Art materials are available to purchase for homework.



Geography

100% Exam

Physical paper	1hr 30m - 35% of final mark
Human paper	1hr 30m - 35% of final mark
Geographical application paper	1hr 15m - 30% of final mark

Revision guides are still available from the department at a cost of £4. Please encourage them to speak with their teacher if they need one

Fieldwork trip (year 11)- Lee on Solent



History

100% Exam

Exam board: Eduqas

Paper 1 (2 hours): Conflict and Upheaval 1337 – 1381 (25%)

USA Nation of Contrasts 1910 – 1929 (25%)

Paper 2 (2 hours): Germany 1919 – 1991 (15%)

Changes in Health and Medicine c.500 –present day (35%)

Pupils will be given revision booklets produced by the school at the start of each unit (Pupils have already been given revision booklets for Conflict and Upheaval and the USA).

Pupils will soon start the Medicine topic and be provided with a revision booklet and a GCSE question booklet which they must bring to every lesson.



MFL

Exam board: AQA 100% exam

- Reading (25%)
- Writing (25%)
- Listening (25%)
- Speaking (25%)

Useful revision sites are [memrise.com](https://www.memrise.com), [GCSEpod](https://www.gcsepod.com) and [quizlet](https://www.quizlet.com). Pupils need to revise vocabulary on a weekly basis.

Many pupils will have bought CGP revision guides in year 9 and should use them. If your child does not have one and would like to purchase one please contact Miss Butler on e.butler@toynbee.hants.sch.uk



Religious Studies

Component 1: Religious, Philosophical and Ethical Studies in the Modern World

- Written examination: 2 hours
- 50% of qualification

Component 2: Study of Christianity

- Written examination: 1 hour
- 25% of qualification

Component 3: Study of Islam

- Written examination: 1 hour
- 25% of qualification



Dance

Component 1 – Performance and Choreography 60% practical.

Performance: (30% of GCSE – 40 marks: 15 marks for set phrases and 25 marks duet /trio performance).

Choreography: (30%of GCSE – 40 marks)

Component 2 - Written paper – (1 ½ hours) 40% theory



Drama

- Component 1: Written exam 40% - Yr 11
- Component 2a: Devising Portfolio 30% - **Summer 2019**
- Component 2b: Devising Performance 10% - **Summer 2019**
- Component 3: Scripted Performance 20% - Yr 11
- Pupils are expected to rehearse regularly after school.
 - Parents will receive a letter shortly regarding the compulsory theatre trips this year (needed for the written exam).
 - Pupils purchased revision guides and textbooks last year. These should be read regularly at home for theory revision, and brought in for theory classes.



Music

Component 1: Theory (40%). Pupils should use websites such as BBC Bitesize at home to revise theory work covered in lessons.

Component 2: Performance (30%). Pupils should be attending instrumental/vocal lesson and rehearsing regularly. They should also have an ensemble which they rehearse with on a regular basis. They will be doing mock solo performances in lessons once a term.

Component 3: Composition (30%). Pupils will be starting their own compositions towards the end of year 10 so they need to make sure they are fluent using Logic Pro. The music room is available for pupils to work on composition after school.



GCSE PE

- Theory lessons pupils will be completing
 - Sports Psychology
 - Health, Fitness and Wellbeing
 - Anatomy & physiology
- Practical lessons – continuing practical assessments. Video footage of external performances required.

GCSE Sport Studies

- Theory lessons – continuing sports leadership module
- Practical lessons – continuing practical assessments.



Core PE

All students are expected to take a full part in core PE lessons.

Signed note if excused – kit even if excused

Team competition until Feb half term

Then choose to specialise in an activity

Summer Term

Team pentathlon competition

Summer activities choice

Current Position

Start of Year 10

- Progress +0.42
- Basics 50.2%(ENG and MATHS)
- EBACC 28.4%
- Attainment 47.9

Toynee's best Results

- Progress +0.24
- 56% Basics (ENG and MATHS)
- EBACC 30%
- Attainment 8 49.4

Key Year 10 Issues

- Boys are significantly under performing in relation to girls
- The year group are performing significantly lower in English than other core subjects
- LLD is still an issue in some lessons



From September 2015 all schools will be required to work with Hampshire County Council to take legal action if (444A & 444B Education Act 1996)

1. A child has unauthorised absence for 10 or more sessions.
2. A child is continually late to school and this lateness is unauthorised for 10 or more sessions.
3. A child has any unauthorised absence during any formal examinations, assessment or testing.

Session = a half day

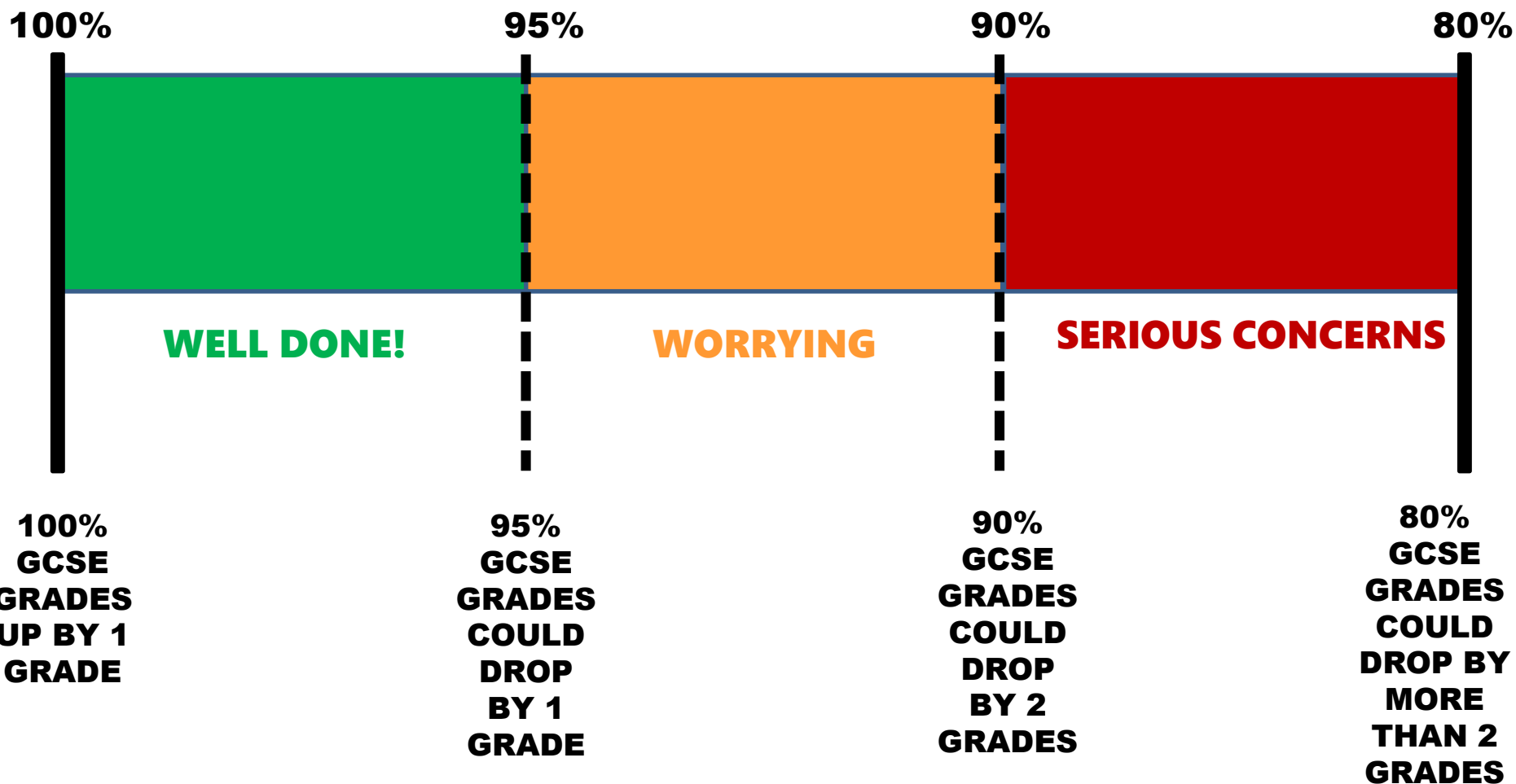
School starts at 8.45am

Please check our website for further details



WHERE ARE YOU?

WHERE ARE YOUR TEAM?

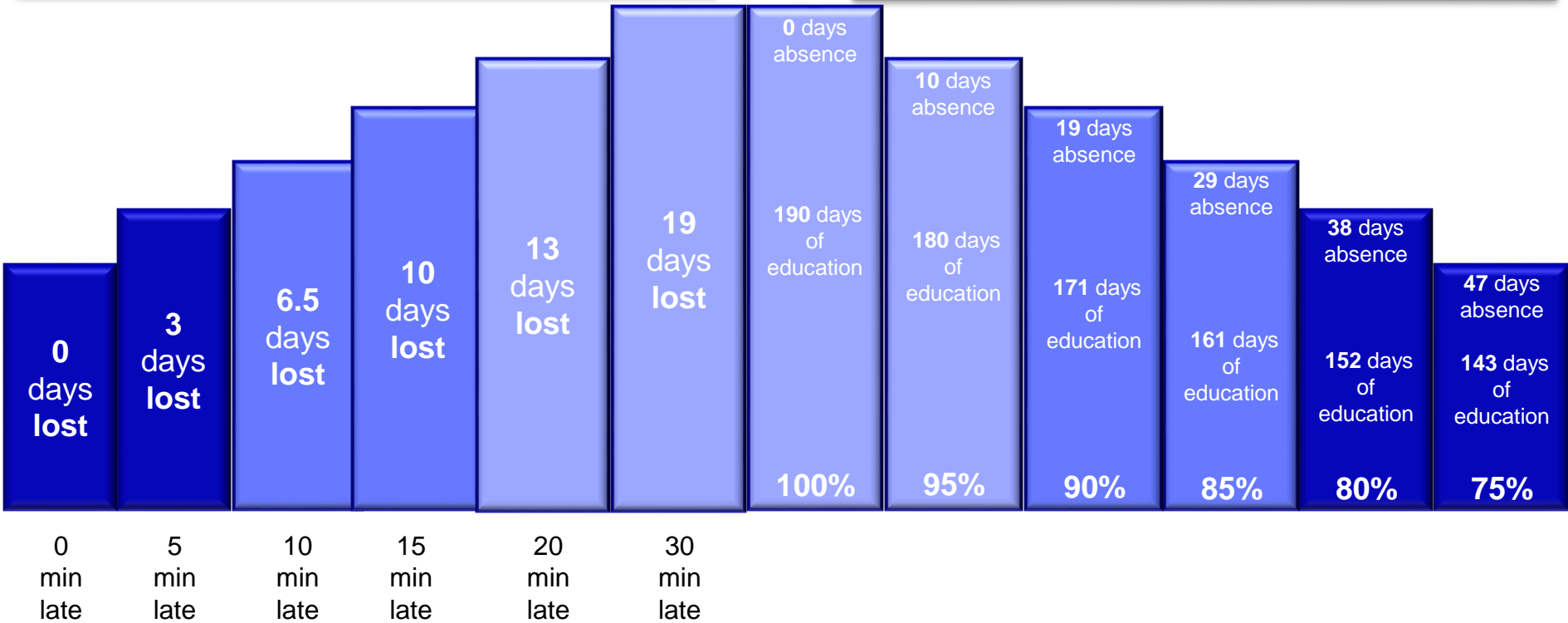




Good time keeping means...

Did you know?
Being **15 minutes late each day** is the same as **missing two weeks** of school!

Wish you were here!





Toynbee School

a specialist humanities school

NOW in our school



GCSEPod, noun: an ingenious service that converts students' existing portable procrastination-boxes into mobile platforms for organised, efficient learning.

award
winning
Audio Visual
content

Quickly set
assignments

Monitor
student
use

Auto
marking

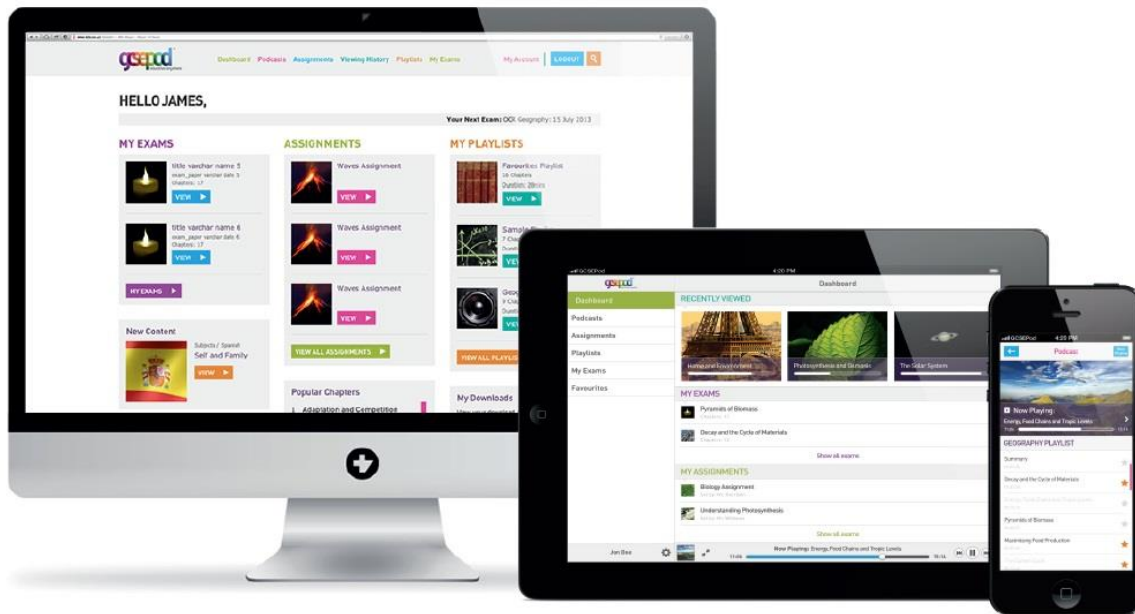
Preferred supplier



Go to www.gcsepod.com

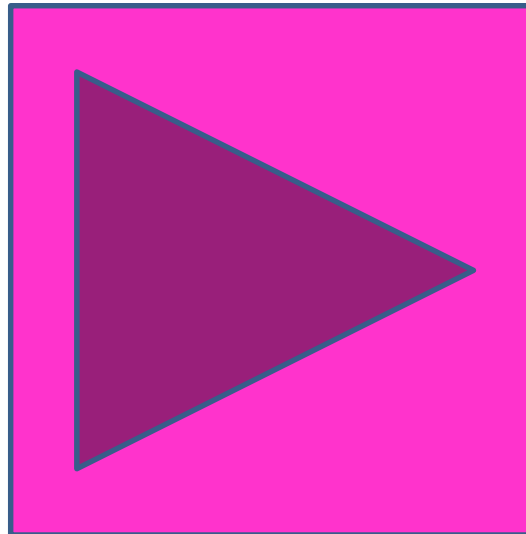


- It's convenient and effective
- It will help you organise your child's learning
- Works anywhere - on mobile tablet, computer





GCSE Pod: Introductory video





Toynbee School

a specialist humanities school



Toynbee School

a specialist humanities school

*"a friendly school, fantastic students,
impressive results"*

Log In



[Home](#) [Our School](#) [Toynbee Life](#) [Parents](#) [Students](#) [Governors](#) [Curriculum](#) [Year 6](#) [Links](#)



Toynbee Celebrates!

Ofsted Rated - Good "A gem in Chandler's Ford"

[Read Full Report Here](#)

Notice Board

News...

School Diary

Schoolcomms
all together, smarter

CURRENT AFFAIRS 4 Sept

TOYNBEE ELECTION RESULTS - ppt produced by our Pupil Leadership Team

Police advice for Sexting & online issues

SELFIE COP - alerts parents to underage sexts - FREE APP Here!

AMAZING GCSE RESULTS!

Toynbee School is celebrating some of our best results ever this summer with our pupils achieving excellent grades across the board. YOU ARE SUPER STARS & WE ARE SO PROUD & DELIGHTED! We would also like to say a HUGE THANK YOU to all our parents who supported our young people so well throughout the whole exam process and a MASSIVE WELL DONE to our teaching and pastoral team who worked so hard with the pupils to deliver top class teaching and imaginative revision lessons. Here are the highlights:-

English 83% A* - C
Maths 80% A* - C
Physics 100% A* - C

Today

Friday, 8 September

Yr 7 Photos

Monday, 11 September

Yr 8 Information Evening for F

Tuesday, 12 September

Yr 11 Information Evening for

Wednesday, 13 September

Yr 9 Information Evening for F

Tuesday, 19 September

Yr 7 Information Evening for F



Toynbee School

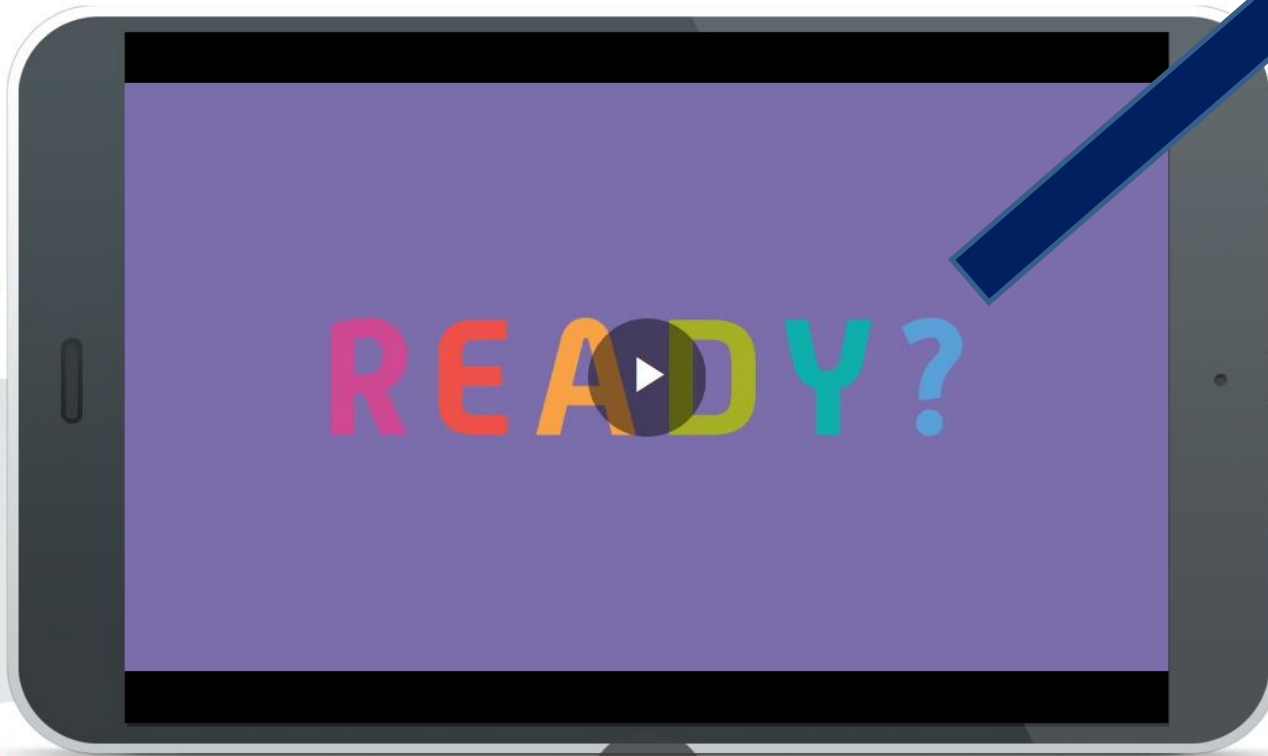
a specialist humanities school



[WHAT IS GCSEPOD](#) / [OUR PODS](#) / [WHY IT WORKS](#) / [YOUR SUBSCRIPTION](#) / [CASE STUDIES](#) / [BLOG](#) / [CONTACT US](#)



LOG IN





Toynbee School

a specialist humanities school



LOGIN

NEW HERE? GET STARTED

USERNAME OR EMAIL ADDRESS

d.hinks@toynbee.hants.sch.uk

PASSWORD

••••••••

LOGIN

Forgotten your login details?

INFO FOR PARENTS / CARERS (NO LOGIN REQUIRED)





Toynbee School

a specialist humanities school



Toynbee School

a specialist humanities school

*"a friendly school, fantastic students,
impressive results"*

Log In



[Home](#) [Our School](#) [Toynbee Life](#) [Parents](#) [Students](#) [Governors](#) [Curriculum](#) [Year 6](#) [Links](#)



Students



[Portal Login](#)

[Email Login](#)

[Study Support](#)

[GCSE Pod](#)

[eSafety](#)

[DofE Award](#)

[Children's University](#)

[Examinations](#)

[Clubs & Activities](#)

[Literacy & Numeracy](#)

Students

It is important that you feel and know this is YOUR school. You shape the community you come to each day. It is important to us that you are happy and that you understand what you are learning and why. We want you to be challenged and work hard so that you can achieve your personal best. Treating your friends, teachers and other pupils with kindness, courtesy and respect and learning to co-operate is what we expect and the key to the very special ethos that makes Toynbee different to other schools.

We are an inclusive school and that means that we welcome pupils of all abilities. It also means that we believe that having the Visually Impaired Resource Centre for Hampshire on our school site enables you to understand and be sensitive to the fact that you are growing up in a world where not everyone has the same needs. We want you to grow the personal characteristics of tolerance and empathy which will take you a long way in your work and personal life.

Toynbee Life section of the website tells you a lot about day to day opportunities and activities at the school. Please embrace every opportunity that comes your way. Get involved.





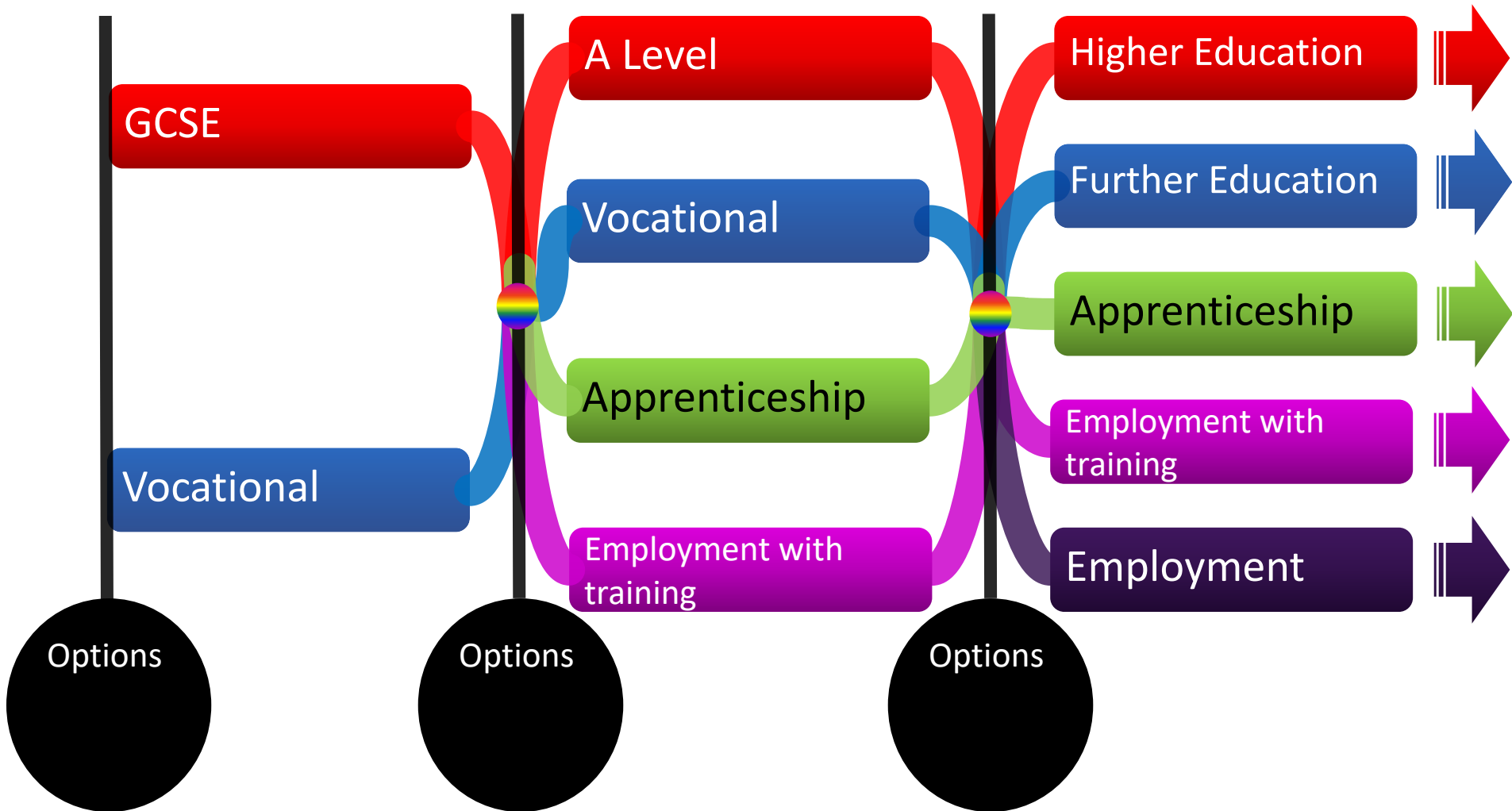
Moving On

Pupils must stay in some form of education or training until their 18th birthday.

Pupils' options are:

- full-time education – eg. at a school or college
- an apprenticeship or traineeship
- part-time education or training - as well as being employed, self-employed or volunteering for 20 hours or more a week

Pathways



Careers at Toynbee

Careers Lead Mrs C Thwaites
Careers Advisor Mr Stephen Pattle

Online resources available through the website
Looking to get parental involvement to share
their careers experience and expertise
Building up an 'employable me' portfolio



Created in partnership in the Solent



Developing the skills needed for employment .

Looking at transferable skills .

Building up a rounded pupil alongside academic achievement .

Being prepared for the future world of work .

Many of the jobs Yr 10 pupils will be doing have not yet been established and may not even exist in the workplace .

PDL days will work to develop their personal statement and complete a 1:1 interview. As well as building up a knowledge of current interview processes in a variety of areas of employment

Opportunities to get employer and college engagement

- Last term we held a post 16 event in which over 25 local colleges and employers had stands and were able to discuss their recruitment routes and requirements
- Tuesday 8th October Post 16 Evening
- Toynbee Theatre and dining area
- 5pm - 7pm



Career Interviews

- Any pupils that require a careers interview , speak to their tutor to book an appointment
- Or
- Email c.thwaites@toynbee.hants.sch.uk

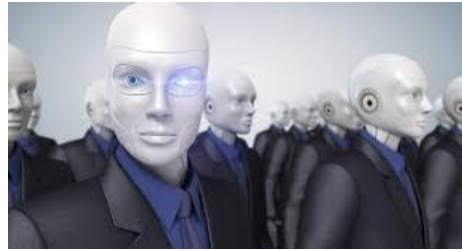
Work Experience - 6th - 10th July 2020

- Pupils are being asked to find a work experience placement and to experience a week at work .
- Employers will have to have public liability cover , employability cover and be engaged in supporting a pupil through an initial interview and then subsequent induction and training .
- Some pupils may not be able to secure a placement and they will remain in school .
- The introduction of work experience is there provide pupils with an insight into the world of work .

External Agency support

- If pupils require support in finding a placement there is a cost implication . At present I am looking to find a company with which to work that will meet demand .
- More information will be sent out via parent mail when I have full details and costings .
- If you are able to support any pupils for work experience or have any contacts please do get in touch via email , including a contact name and number .

Ongoing Career Information



Next 7 years

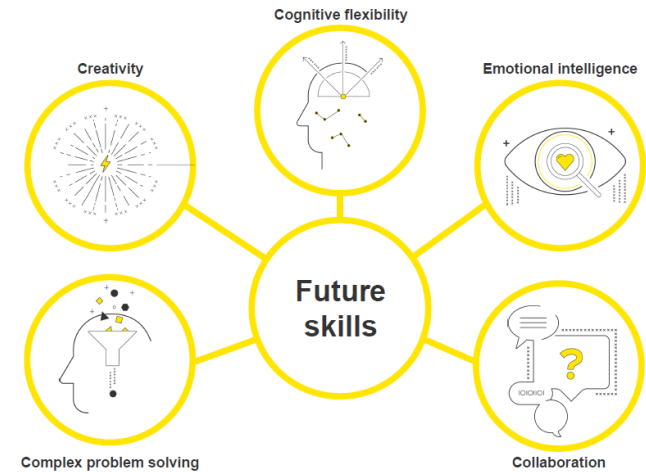


7 million reach working age



14 million retiring

7 million shortfall in UK workforce



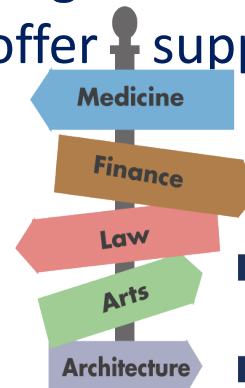


Post 16 Evening

Various colleges, employers and universities will be coming to Toynbee on Tuesday 8th October.

The evening runs from 5.30pm until 7.00pm.

It is a great opportunity to ask questions and get more information. There will also be a Careers Advisor attending to offer support and guidance.



Careers Evening



Looking ahead

Post-18

UCAS Website – One Stop Shop:

All courses

All Universities

Admission guidance

www.ucas.ac.uk

The big picture: KS4

English

Maths

Science

PE

Option 1

Option 2

Option 3

Option 4

New GCSEs



- A national agenda designed to 'raise the bar'
- New specifications in all subjects
- Less coursework: more final exam focused

Old GCSE		New GCSE	
		9	
A*		8	
A		7	
B		6	Strong Pass
C		5	
		4	Standard Pass
D		3	
E		2	
F		1	
G			
U		U	

The Key Stage

At Toynbee GCSE's are studied over three years. As a Progress Director I will have a specific focus for each of these:

- Year 9 - Setting the correct learning environment
- Year 10 - Focus on the Mocks
- Year 11 - supporting revision and achieving target grades

Target Grades



At Key Stage 4 each student is set a Projected GCSE Outcome.

This is derived from prior attainment data, national value added statistics and the professional judgement of teachers.

GCSE Assessment

- Each student will receive an attitude grade between 1 and 4
- An Attitude Grade of a 3 indicates that the student has a positive approach to their learning.
- Each student will receive a current attainment grade which should be in line with their projected outcome

GCSE Assessment

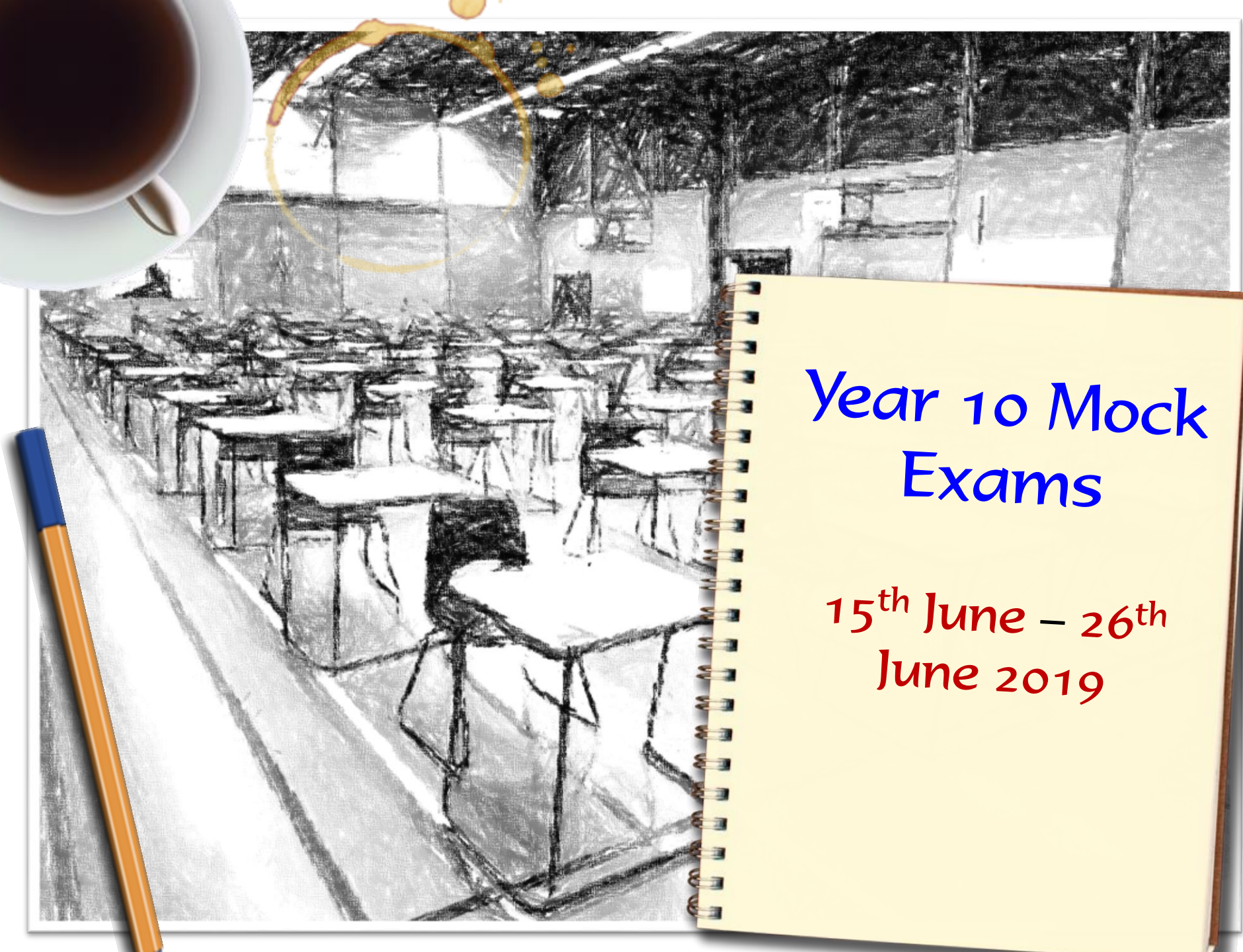
- Each student will receive an attitude grade between 1 and 4
- An Attitude Grade of a 3 indicates that the student has a positive approach to their learning.
- Each student will receive a current attainment grade which should be in line with their projected outcome

Required Equipment

- Black Pen
- HB Pencil
- Rubber
- Ruler
- Calculator

Mock examinations

- This will be the main focus for Year 10



Year 10 Mock Exams

15th June – 26th
June 2019

Key Stage 4: Timeline

Year 10

Sept May 2017 2018	Oct June 2017 2018	Nov July 2017 2018	Dec 2017	Jan 2018	Feb 2018	Mar 2018	Apr 2018
-----------------------------	-----------------------------	-----------------------------	-------------	-------------	-------------	-------------	-------------

Year 11

Sept May 2018 2019	Oct June 2018 2019	Nov July 2018 2019	Dec 2018	Jan 2019	Feb 2019	Mar 2019	Apr 2019
-----------------------------	-----------------------------	-----------------------------	-------------	-------------	-------------	-------------	-------------

Key Stage 4: Timeline



Year 10

Sept May 2017 2018	Oct June 2017 2018	Nov July 2017 2018	Dec 2017	Jan 2018	Feb 2018	Mar 2018	Apr 2018
-----------------------------	-----------------------------	-----------------------------	-------------	-------------	-------------	-------------	-------------

Year 11

Sept May 2018 2019	Oct June 2018 2019	Nov July 2018 2019	Dec 2018	Jan 2019	Feb 2019	Mar 2019	Apr 2019
-----------------------------	-----------------------------	-----------------------------	-------------	-------------	-------------	-------------	-------------

Key Stage 4: Timeline

Year 10

Sept	Oct	Nov	Dec	Jan	Feb	Mar	Apr
May	June	July					
2017	2017	2017	2017	2018	2018	2018	2018
2018	2018	2018					

Year 11

Sept	Oct	Nov	Dec	Jan	Feb	Mar	Apr
May	June	July					
2018	2018	2018	2018	2019	2019	2019	2019
2019	2019	2019					



Mock
Exam
Period


Key Stage 4: Timeline

Year 10


Sept	Oct	Nov	Dec	Jan	Feb	Mar	Apr
May	June	July					
2017	2017	2017	2017	2018	2018	2018	2018
2018	2018	2018					

Year 11

Sept	Oct	Nov	Dec	Jan	Feb	Mar	Apr
May	June	July					
2018	2018	2018	2018	2019	2019	2019	2019
2019	2019	2019					



Mock
Exam
Period



GCSE
Exam
Period

Key Stage 4: Timeline

Year 10

Sept	Oct	Nov	Dec	Jan	Feb	Mar	Apr
May	June	July					
2017	2017	2017	2017	2018	2018	2018	2018
2018	2018	2018					

4 to 5 months

Year 11

Sept	Oct	Nov	Dec	Jan	Feb	Mar	Apr
May	June	July					
2018	2018	2018	2018	2019	2019	2019	2019
2019	2019	2019					

Mock
Exam
Period

GCSE
Exam
Period

Final exams

- In 2019, the exam period runs from 11th May to the 26th June. However, first exam last year was 20th April (Art)
- It is roughly about 4 weeks long – 2 weeks either side of half term.
- Last year busiest week had 10 different exams taking place.
- Some pupils will do in the region of 35 hours of exams.
- One girl had three exams to complete on one day

Build up to the Mocks

- 5th February – PDL Day: Revision
- 11th February – Parents Revision Evening
- 24th Feb onwards - Revision a high profile in lessons
- 15th June-26th June - Mock Exam Period
- Final week of term - Mock results published.

Year 10 Key Dates 2018-19

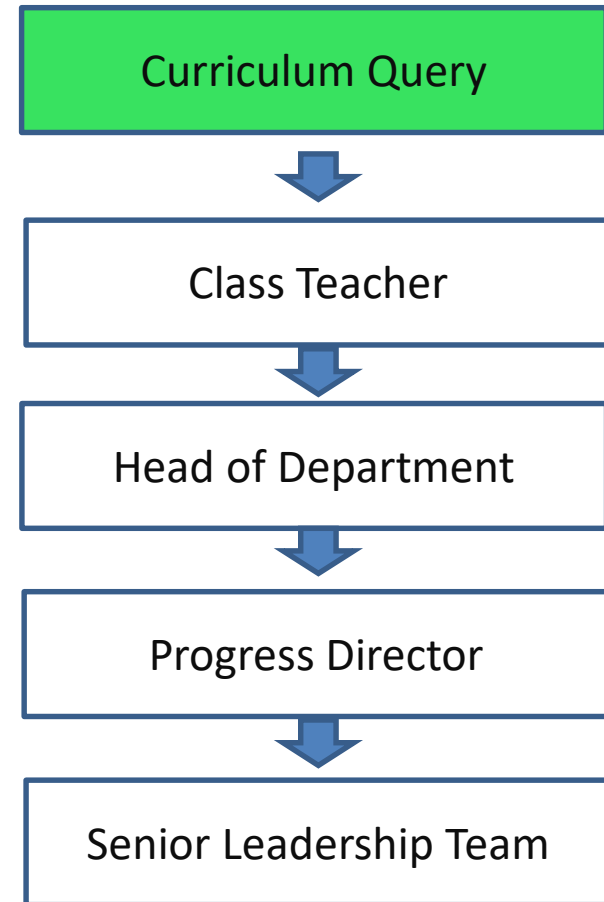
27th September – INSET Day
3rd October – Early Closure (12:20pm) Open Evening
8th October – Post 16 Evening
15th October – Personal Development Learning Day 1
25th October – Charity Day
6th December – INSET Day
20th December – End of Autumn Term(12.30pm)
6th January – Start of Spring Term (11:00am)
21st January – Science Live Trip to Oxford
5th February – Personal Development Learning Day 2
11th February – Parents Revision Evening
13th March-Years 9 and 10 French Trip
29th April – Parents Evening
4th-11th June - MFL speaking mocks
15th, 16th June - Year 10 food mocks
15th-26th June – Year 10 Mock Exam Period
23rd June – Personal Development Learning Day 3
25th June – Summer Concert
26th June – PE Awards Evening
1-3rd July – School Production
6th July – Awards Evening
6th -10th July - Work Experience
13th July – Sports Day
16th July – Rewards Trip



Communicating with school



m.vallance@toynbee.hants.sch.uk



s.magee@toynbee.hants.sch.uk



Toynbee School
a specialist humanities school

Thank you for coming