



September 2019

**Welcome to
Parents Information Evening**

Mr Longden – Head teacher

Mr Magee – Key Stage Four Director of Progress

Mrs Palmer – Year 9 Guidance Manager



OFSTED 2019

“The leadership team has maintained the good quality of education in the school since the last inspection. Your principled and determined leadership has created a caring and stimulating ethos in the school that enables pupils to make strong progress and achieve well.”

“You and your highly effective leadership team are ambitious for pupils and carefully consider their best interests in everything you do.”



GCSE Results 2019

Once again, we are very proud of all our students, who have achieved another excellent set of results. Both pupils and staff have risen to the challenge of the more difficult GCSEs and turned in some exceptional performances.

English and Maths results continue to be of a very high standard. Provisional results show over 70% and 80% of pupils achieved a grade 9 to 4 in English and Maths respectively; with 70% achieving a grade 9 to 4 in both subjects.

There has also been a very strong performance in Science with 71% of pupils achieving two grade 4s or higher in the subject. The performance of the triple sciences was some of the best in the school with over 35% of pupils achieving grade 9 to 7 in Biology, Chemistry and Physics.

The performance of the core subjects combined with very strong attainment in the Humanities and Modern Foreign Languages has seen the school achieve a very strong figure of 21% this year for the more rigorous Ebacc, where a grade 5+ is required in all elements



The task ahead is to continue...

- Raise the bar in terms of standards
- Strengthen the learning culture across the school
- Continue our excellent pastoral care and support
- Strive for “Personal Best” in all we do
- The success and care of all our young people at the centre of all we do



“PERSONAL BEST”

We are a school that strives for excellence and personal best in all that we do. We aim to provide a holistic and inclusive educational experience for all our young people.





English

It is essential that all pupils have their own copy of the English Literature set texts they are studying, so they can make their own notes.

Year 9 students will not be expected to do this until the start of Year 10. Parents will be informed of the text titles at the start of year 10.

Exams:

Language

Paper 1: Fiction reading and writing: 40%

Paper 2: Non-fiction: 60%

Literature

19th Century Novel & Shakespeare: 40%

Modern Text & Poetry: 60%



Maths

All Pupils will sit three GCSE papers (AQA). Each paper is 1 hour 30 minutes long and is worth 33.33% of the final GCSE grade.

Paper 1: Non-calculator

Paper 2: Calculator

Paper 3: Calculator

Each paper consists of a mix of question styles, from short, single-mark questions to multi-step problems. The mathematical demand increases as a pupil progresses through the paper.



Science

Pupils will be studying either:

- Combined Science (which will result in two GCSEs)
- Triple Science (which will result in three GCSEs)

Mrs Kerwood will send information home about how to purchase revision guides.

s.kerwood@toynbee.hants.sch.uk



Computer Science

100% exam + NEA (Non-Examined Assessment)

Component	Marks	Duration	Weighting	
Computer systems (01)	80	1 hour 30 mins	50%	Calculators not allowed
Computational thinking, algorithms and programming (02)	80	1 hour 30 mins	50%	Calculators not allowed

NEA is a programming project to develop their practical ability in the skills developed in components 01 and 02. Students are required to spend 20 hrs in the classroom on the programming task.

IT rooms are available after school for the students to complete all tasks.

Revision Guides and a specific Programming guide are available through the school.



Design and Technology

Controlled Assessment 50% Exam 50%

Year 9 will consist of 3 units of study:

Timber: Games & Puzzles

Electronics: Amplifier

Fabrics & Fibres: Dress Down

They will cover material Theory within each unit and of unit tests will form part of termly assessments.

An online text book is available to support them throughout the course and can be used for critical revision in year 11. A letter will



Art

60% coursework and 40% Exam.

Coursework will start in year 9 and continue into the first 4 months of year 11.

The GSCE exam consist of around 20 lessons plus 10 homework's to prepare for the exam. Preparation work is worth 75% of the grade.

The exam takes place over two days where they will make a final piece in response to their preparation.

Timetabled catch up sessions will be available after school.

Art materials are available to purchase for homework.



Geography

100% Exam

Physical paper	1hr 30m - 35% of final mark
Human paper	1hr 30m - 35% of final mark
Geographical application paper	1hr 15m - 30% of final mark

Revision guides will be available to purchase soon however other valuable revision material will be made available to your child throughout the course by their teacher. Please encourage your child to organise and store these resources until the end of their GCSEs.



History

100% Exam

Exam board: Eduqas

Paper 1 (2 hours): Conflict and Upheaval 1337 – 1381 (25%)
USA Nation of Contrasts 1910 – 1929 (25%)

Paper 2 (2 hours): Germany 1919 – 1991 (15%)
Changes in Health and Medicine c.500 – present day (35%)

Pupils will be given revision booklets and question booklets produced by the school at the start of each unit.



MFL

100% exam

- Reading (25%)
- Writing (25%)
- Listening (25%)
- Speaking (25%)

Useful revision sites are [memrise.com](https://www.memrise.com) and [quizlet](https://www.quizlet.com). Pupils need to revise vocabulary on a weekly basis. CGP AQA revision guide will be available to purchase through the school.



Religious Studies

Component 1: Religious, Philosophical and Ethical Studies in the Modern World

- Written examination: 2 hours
- 50% of qualification

Component 2: Study of Christianity

- Written examination: 1 hour
- 25% of qualification

Component 3: Study of Islam

- Written examination: 1 hour
- 25% of qualification



Dance

Component 1 – Performance and Choreography 60% practical.

Performance: (30% of GCSE – 40 marks: 15 marks for set phrases and 25 marks duet /trio performance).

Choreography: (30%of GCSE – 40 marks)

Component 2 - Written paper – (1 ½ hours) 40% theory



Year 9 Drama

Component 1 – Written exam 40%

Component 2a – Devising Portfolio 30%

Component 2b – Devising Performance 10%

Component 3 – Scripted Performance 20%

- Pupils are expected to rehearse at least once after school in the lead up to practical assessments. This is their revision for practical elements.
- It is imperative that the devising portfolio is completed to the best of their ability and handed in on time – it is a key part of this course.
- Pupils will need to buy 2 textbooks and a revision guide to support their work. A letter will be going home soon.
- Parents will also receive a letter shortly regarding theatre trips this year (needed for the written exam).



Music

Component 1: Theory (40%). Pupils can access music theory lessons on GCSE POD and BBC bitesize to support the work done in lessons. They have also been given information about our additional music theory class (paid for in the same way as instrumental lessons).

Component 2: Performance (30%). Pupils should be attending instrumental/vocal lesson and rehearsing regularly. They should also have an ensemble which they rehearse with on a regular basis.

Component 3: Composition (30%). Throughout this year pupils will be learning to compose in a variety of musical styles. The music room is available for them to work on additional compositions every day after school.



Exam Course Physical Education

GCSE PE

60% Exam (2 exams in June of Y11)

30% Practical assessment (3 sports)

10% Written coursework

GCSE Sport Studies

25% Exam (January of Y11, can retake in June of Y11)

25% Practical assessment (2 sports)

25% Written coursework (Sports Industry)

25% Written coursework (Sports Leadership)



Core PE

1 lesson per week

Grouped into Games / Aesthetics / Lifestyle until Easter

Summer sports during the summer term

All students are expected to take a full part in core PE lessons.

Notes signed by home when excused

Expected to still wear PE kit for lessons when excused



From September 2015 all schools will be required to work with Hampshire County Council to take legal action if (444A & 444B Education Act 1996)

1. A child has unauthorised absence for 10 or more sessions.
2. A child is continually late to school and this lateness is unauthorised for 10 or more sessions.

Session = a half day

School starts at 8.45am

Please check our website for further details

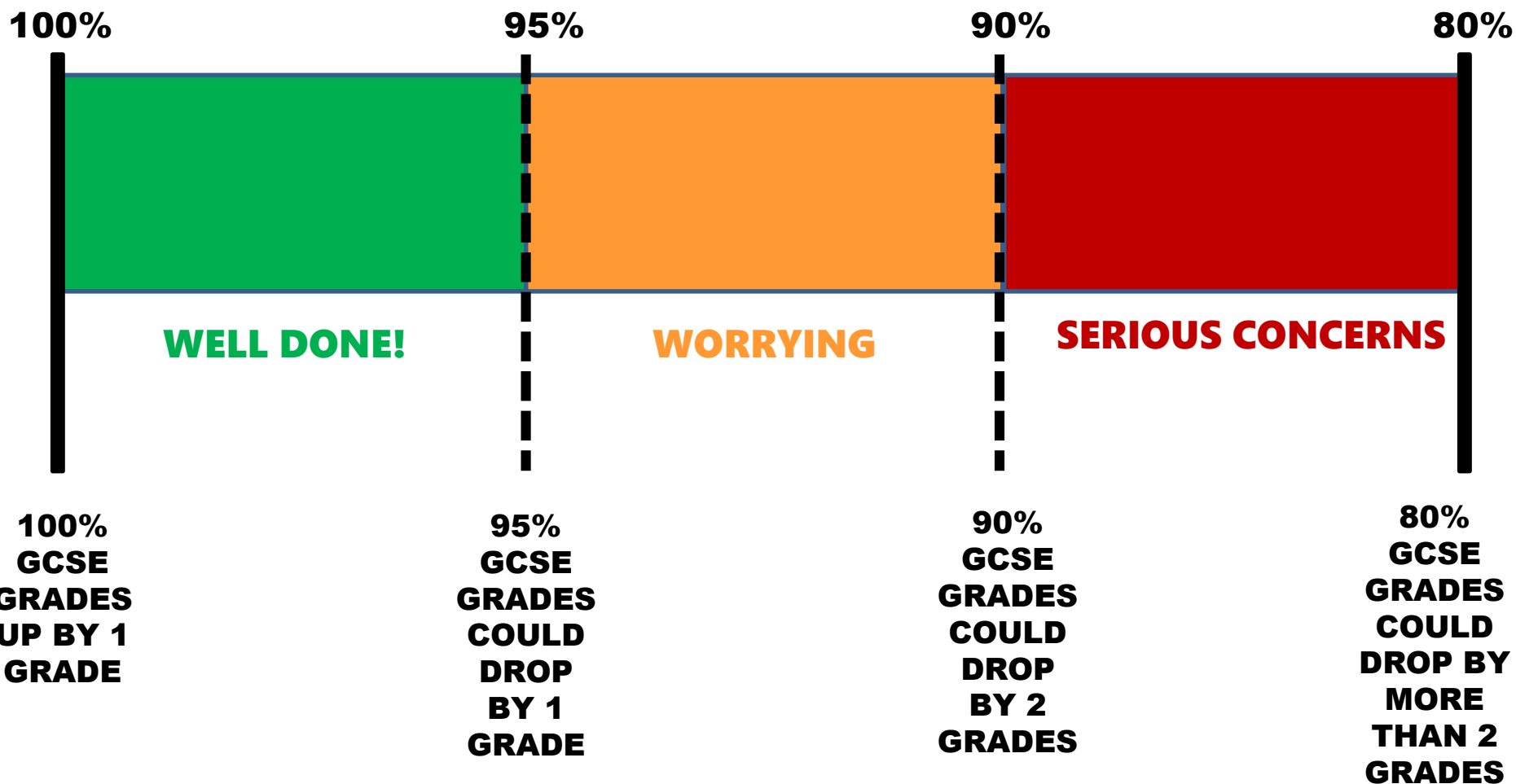


Toynbee School
a specialist humanities school

ATTENDANCE – EVERY DAY COUNTS!

WHERE ARE YOU?

WHERE ARE YOUR TEAM?



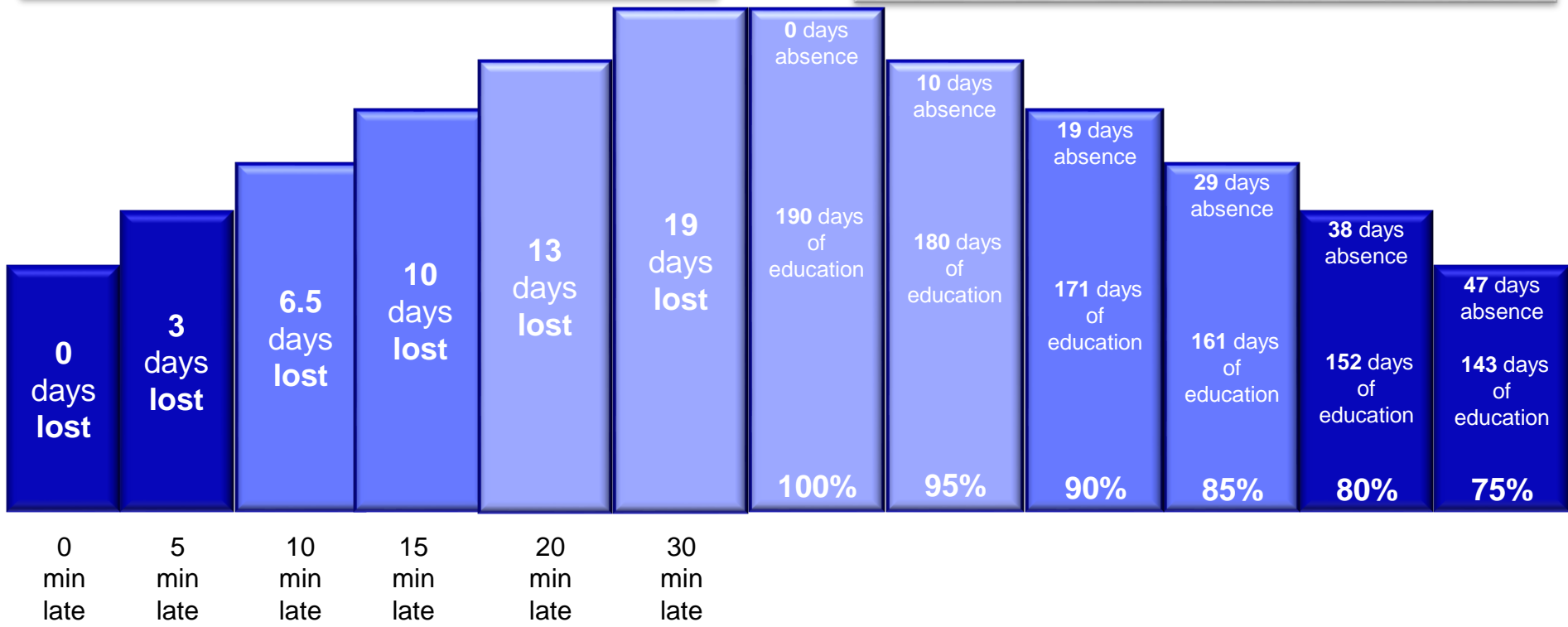


Good time keeping means...

Did you know?
 Being **15 minutes**
 late each day is the
 same as **missing two**
 weeks of school!



Wish you were here!





Toynbee School

a specialist humanities school

NOW in our school



GCSEPod, noun: an ingenious service that converts students' existing portable procrastination-boxes into mobile platforms for organised, efficient learning.

award
winning
Audio Visual
content

Quickly set
assignments

Monitor
student
use

Auto
marking

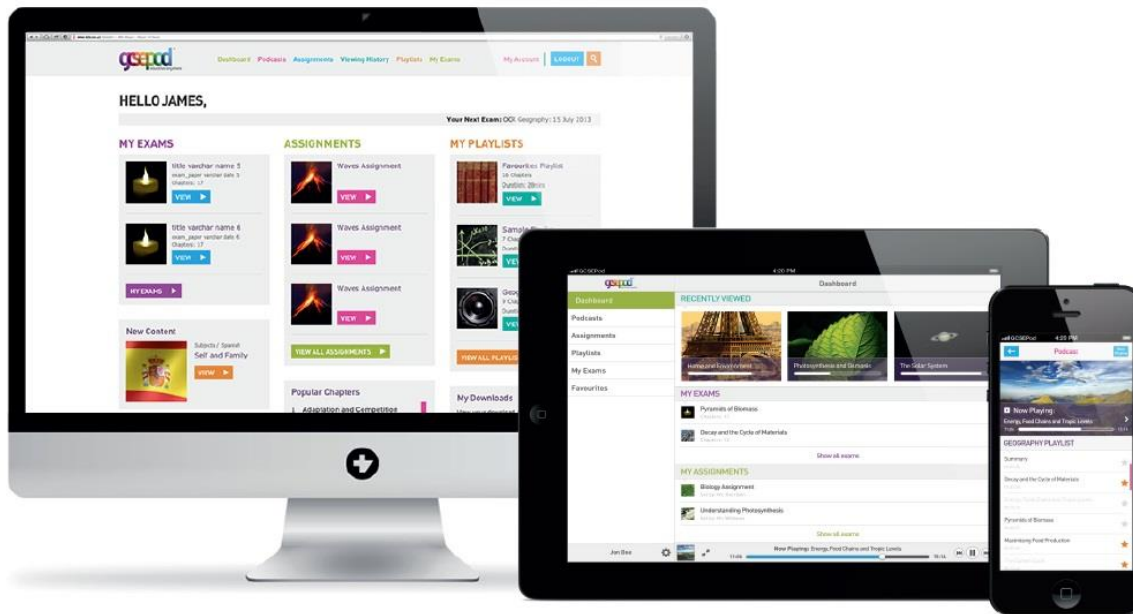
Preferred supplier



Go to www.gcsepod.com

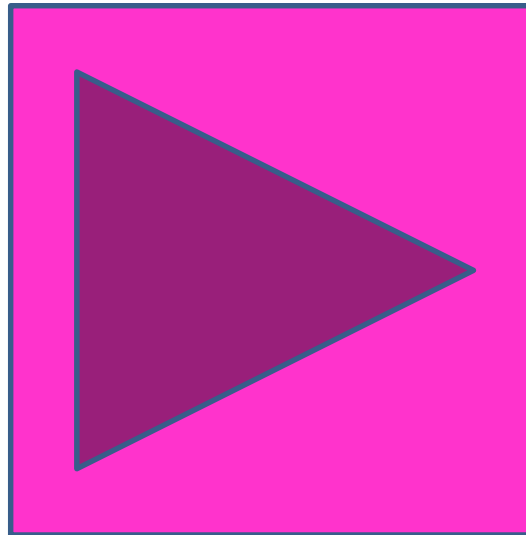


- It's convenient and effective
- It will help you organise your child's learning
- Works anywhere - on mobile tablet, computer





GCSE Pod: Introductory video





Toynbee School

a specialist humanities school



Toynbee School

a specialist humanities school

*"a friendly school, fantastic students,
impressive results"*

Log In



Home Our School Toynbee Life Parents Students Governors Curriculum Year 6 Links



Toynbee Celebrates!

Ofsted Rated - Good "A gem in Chandler's Ford"

[Read Full Report Here](#)



Notice Board

News...

School Diary

Schoolcomms
all together, smarter

CURRENT AFFAIRS 4 Sept

TOYNBEE ELECTION RESULTS - ppt produced by our Pupil Leadership Team

Police advice for Sexting & online issues

SELFIE COP - alerts parents to underage sexts - FREE APP Here!

AMAZING GCSE RESULTS!

Toynbee School is celebrating some of our best results ever this summer with our pupils achieving excellent grades across the board. YOU ARE SUPER STARS & WE ARE SO PROUD & DELIGHTED! We would also like to say a HUGE THANK YOU to all our parents who supported our young people so well throughout the whole exam process and a MASSIVE WELL DONE to our teaching and pastoral team who worked so hard with the pupils to deliver top class teaching and imaginative revision lessons. Here are the highlights:-

English 83% A* - C
Maths 80% A* - C
Physics 100% A* - C

Today

Friday, 8 September

Yr 7 Photos

Monday, 11 September

Yr 8 Information Evening for F

Tuesday, 12 September

Yr 11 Information Evening for

Wednesday, 13 September

Yr 9 Information Evening for F

Tuesday, 19 September

Yr 7 Information Evening for F



Toynbee School

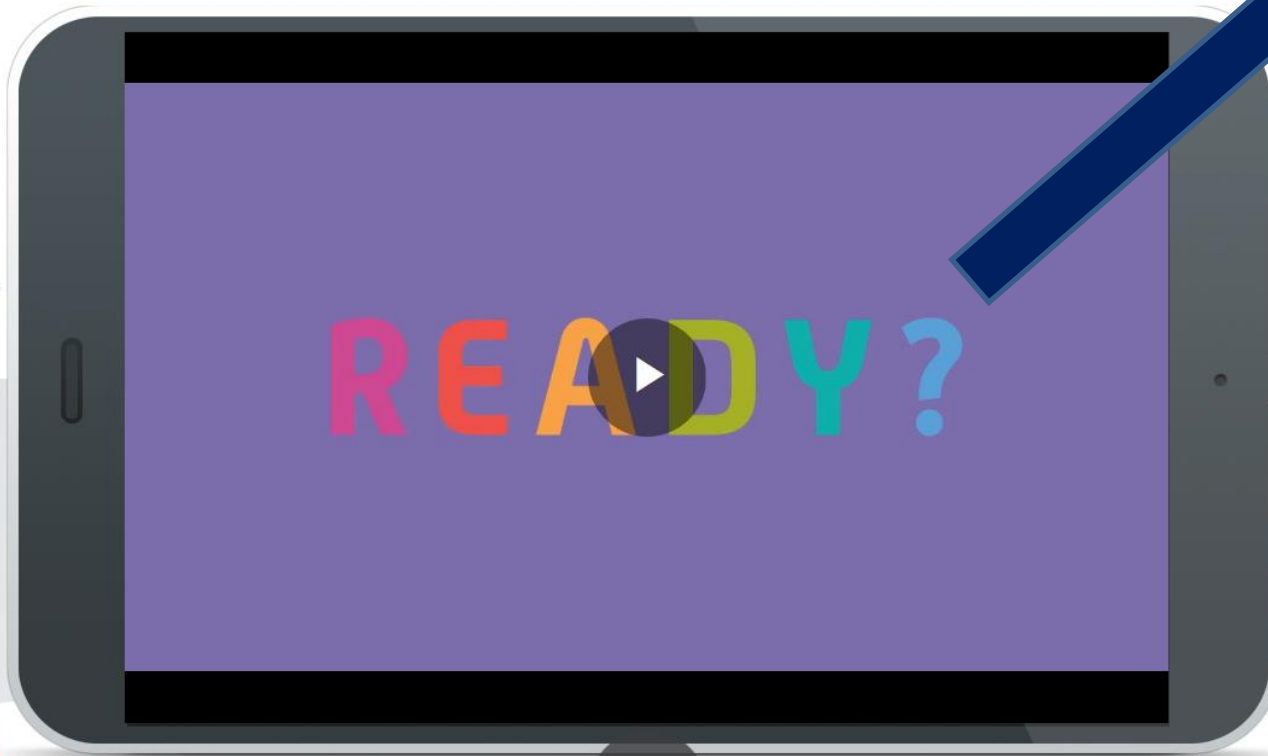
a specialist humanities school



[WHAT IS GCSEPOD](#) / [OUR PODS](#) / [WHY IT WORKS](#) / [YOUR SUBSCRIPTION](#) / [CASE STUDIES](#) / [BLOG](#) / [CONTACT US](#)



LOG IN





Toynbee School

a specialist humanities school



LOGIN

NEW HERE? GET STARTED

USERNAME OR EMAIL ADDRESS

d.hinks@toynbee.hants.sch.uk

PASSWORD

••••••••

LOGIN

Forgotten your login details?

INFO FOR PARENTS / CARERS (NO LOGIN REQUIRED)





Toynbee School

a specialist humanities school



Toynbee School

a specialist humanities school

*"a friendly school, fantastic students,
impressive results"*

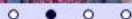
Log In



[Home](#) [Our School](#) [Toynbee Life](#) [Parents](#) [Students](#) [Governors](#) [Curriculum](#) [Year 6](#) [Links](#)



Students



[Portal Login](#)

[Email Login](#)

[Study Support](#)

[GCSE Pod](#)

[eSafety](#)

[DofE Award](#)

[Children's University](#)

[Examinations](#)

[Clubs & Activities](#)

[Literacy & Numeracy](#)

Students

It is important that you feel and know this is YOUR school. You shape the community you come to each day. It is important to us that you are happy and that you understand what you are learning and why. We want you to be challenged and work hard so that you can achieve your personal best. Treating your friends, teachers and other pupils with kindness, courtesy and respect and learning to co-operate is what we expect and the key to the very special ethos that makes Toynbee different to other schools.

We are an inclusive school and that means that we welcome pupils of all abilities. It also means that we believe that having the Visually Impaired Resource Centre for Hampshire on our school site enables you to understand and be sensitive to the fact that you are growing up in a world where not everyone has the same needs. We want you to grow the personal characteristics of tolerance and empathy which will take you a long way in your work and personal life.

Toynbee Life section of the website tells you a lot about day to day opportunities and activities at the school. Please embrace every opportunity that comes your way. Get involved.





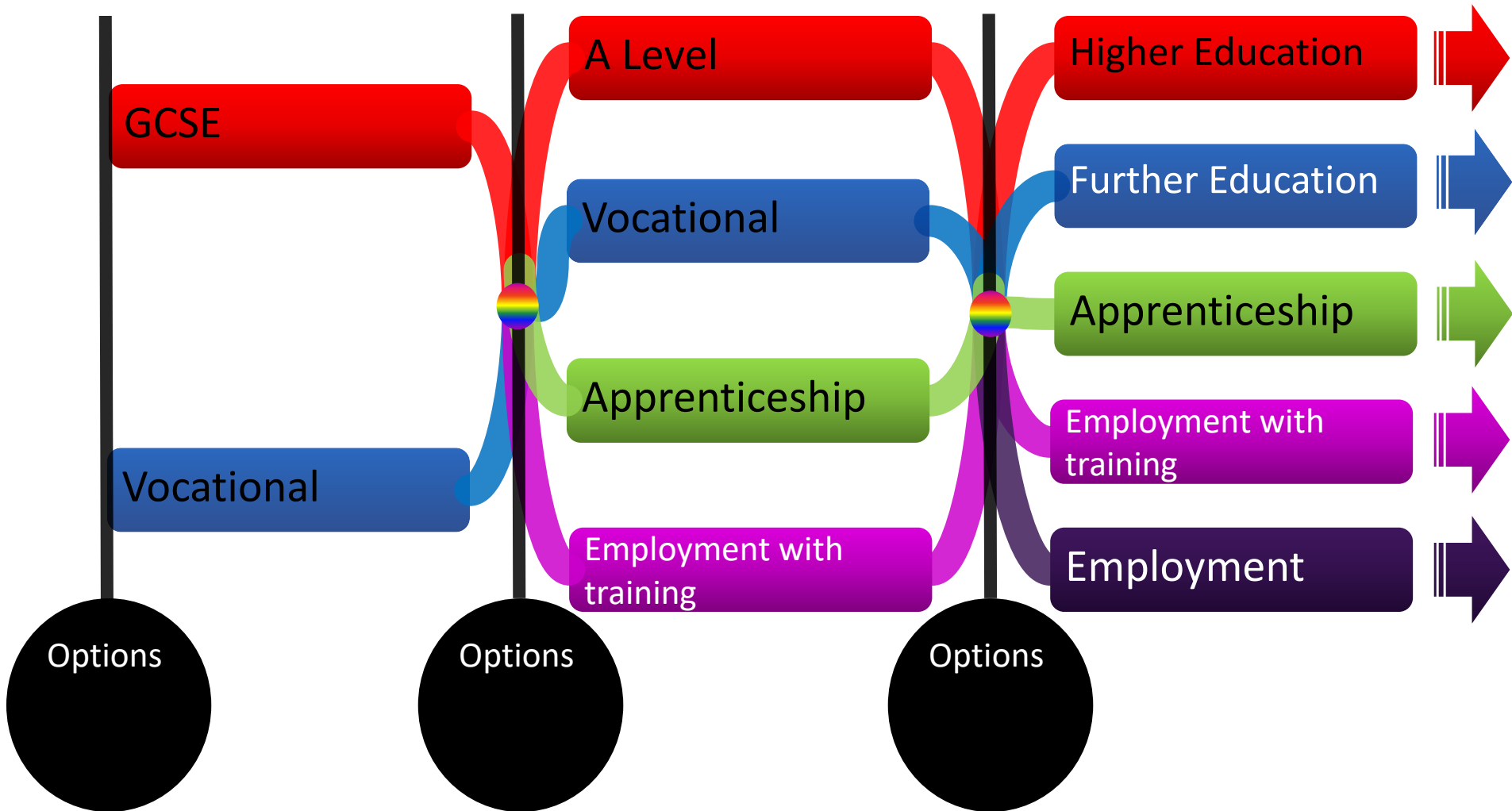
Moving On

Pupils must stay in some form of education or training until their 18th birthday.

Pupils' options are:

- full-time education – e.g.. at a school or college
- an apprenticeship or traineeship
- part-time education or training - as well as being employed, self-employed or volunteering for 20 hours or more a week

Pathways



Careers at Toynbee

Careers Lead Mrs C Thwaites

Careers Advisor Mr Stephen Pattle

Online resources available through the website

Looking to get parental involvement to share their
careers experience and expertise

Building up an 'employable me' portfolio



Created in partnership in the Solent

Developing the skills needed for employment .

Looking at transferable skills .
Building up a rounded pupil alongside academic achievement .

Being prepared for the future world of work .

Many of the jobs Yr 9 pupils will be doing have not yet been established and may not even exist .

PDL days will also work to develop teamwork and communication 23rd June 2020



Looking ahead

Post-18

UCAS Website – One Stop Shop:

All courses

All Universities

Admission guidance

www.ucas.ac.uk

The big picture: KS4

English

Maths

Science

PE

Option 1

Option 2

Option 3

Option 4

New GCSEs



- A national agenda designed to 'raise the bar'
- New specifications in all subjects
- Less coursework: more final exam focused

Old GCSE		New GCSE	
		9	
A*		8	
A		7	
B		6	Strong Pass
C		5	
		4	Standard Pass
D		3	
E		2	
F		1	
G			
U		U	

The Key Stage

At Toynbee GCSE's are studied over three years. As a Progress Director I will have a specific focus for each of these:

- Year 9 - Setting the correct learning environment
- Year 10 - Focus on the Mocks
- Year 11 - supporting revision and achieving target grades

Target Grades



At Key Stage 4 each student is set a Projected GCSE Outcome.

This is derived from prior attainment data, national value added statistics and the professional judgement of teachers.

GCSE Assessment

- Each student will receive an attitude grade between 1 and 4
- An Attitude Grade of a 3 indicates that the student has a positive approach to their learning.
- Each student will receive a current attainment grade which should be in line with their projected outcome

Year 9 Strategy

Removing Low Level Disruption

Research into Low Level Disruption

OFSTED

The findings from that survey show that teachers, parents and carers are rightly concerned about the frequent loss of learning time through low-level but persistent disruptive behaviour.

This report demonstrates that, in too many schools, teachers are frustrated by this sort of behaviour

The findings set out in this report are deeply worrying. This is not because pupils' safety is at risk where low-level disruption is prevalent, but because this type of behaviour has a detrimental impact on the life chances of too many pupils.

YouGov surveys show that pupils are potentially losing up to an hour of learning each day because of this kind of disruption in classrooms.

This is equivalent to 38 days of teaching lost per year. A large number of pupils, therefore are being denied a significant amount of valuable learning time

What is Low Level Disruption?

Low level disruption



Low level disruption can cost hours of lesson time over a year and WILL NOT BE TOLERATED IN MY LESSONS. The following counts as low level disruption...

Talking at an inappropriate time such as over the teacher or during a quiet task. #TALKING

Making excessive or silly noises which are not appropriate to the situation #NOISE

Deliberately annoying or distracting another student, physically or verbally. #ANNOY

Taking too long to settle down when asked to be quiet or deliberately time wasting. #TIME

Arguing back, nagging, pleading and seeking #ARGUE attention unnecessarily.

Making requests at an inappropriate time, e.g. water bottles, toilet #INAPPROPRIATE

So how do we avoid low level disruption?

- Attend School - understand the importance of lesson time.
- Arrive on time to lessons.
- Leave social issues outside the lesson
- Focus fully on all teacher instructions
- Focus fully on all tasks set
- Don't distract someone else from working
- Don't go to the toilet during lessons
- Set work time at home where there are no distractions-NO PHONE
- Complete homework on time
- Avoid distractions, think about what is important!

Required Equipment

- Black Pen
- HB Pencil
- Rubber
- Ruler
- Calculator

Revision guides

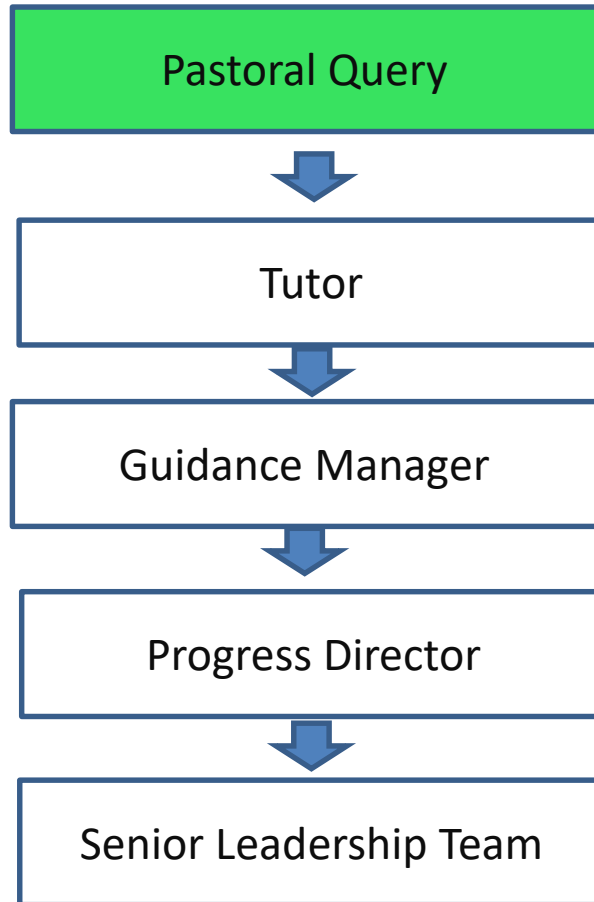
Year 9 Key Dates 2019-20

12th September - Information Evening 6:30pm – 7:30pm
27th September– INSET
3rd October– Early closure 12:20 (Open Evening)
15th October – Personal Development Learning Day 1
25th October– Charity Day
5th December – Carol Service 7pm
6th December – INSET
20th December – Early closure 12.30pm
6th January – Late start 11am
5th February – Personal Development Learning Day 2
5th March – World Book Day
28th March- Year 8/9 French Study trip
10th June – Parents Evening 4:15pm – 6:45pm
23rd June - Personal Development Learning Day 3
25th June - Summer Concert
26th June – PE Awards Evening (Invitation only)
1-3rd July - School Production
6th July – Yr. 7-10 Awards Evening (Invitation only)
13th July – Sports Day
15th July – Reward Trip
17th July - End of term 12.00pm

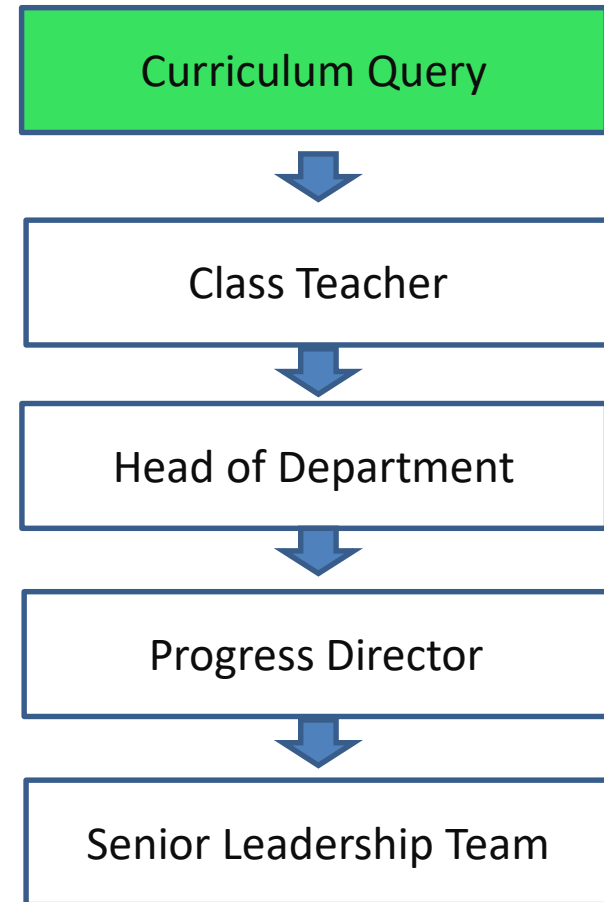




Communicating with school



k.palmer@toynbee.hants.sch.uk



s.magee@toynbee.hants.sch.uk



Communication

- Emails
- For general class issues, it is best to go straight to the class teacher
- Email addresses are generic:
firstinitial.surname@toynbee.hants.sch.uk



Toynbee School
a specialist humanities school

Thank you for coming